

Vigilant® H2 Series LED High Bay - CE  
for Indoor and Outdoor Industrial Applications



# Vigilant® H2 Series LED High Bay - CE

## for Indoor and Outdoor Industrial Applications



### About Dialight

Dialight (LSE: DIA.L) is leading the energy efficient LED lighting revolution around the world for industrial and hazardous areas as well as transportation and infrastructure applications. For 40 years it has been committed to the development of LED lighting solutions that enable organizations to vastly reduce energy use and maintenance needs, improve safety, ease disposal and reduce CO<sub>2</sub> emissions.

### History at a Glance

1938 → Dialight founded in Brooklyn, NY  
1971 → LED Circuit Board Indicator  
1994 → LED Transit Vehicle Signals  
1995 → LED Traffic Signals  
2000 → FAA certified LED Obstruction Lights  
2007 → LED Lighting for Hazardous Locations  
2009 → LED High Bay Fixtures  
2012 → Full performance 10-year warranty  
2013 → Controls for LED Lighting  
2014 → 125lm / W High Bay

### Typical Applications

- Oil, Gas & Petrochemical
- Power Generation
- Mining
- Chemical
- Pharmaceutical
- Water & Sewage
- Food & Beverage
- Manufacturing
- Warehousing
- Cold Storage

### View the full case studies at:

G.S. Dunn Limited - [www.dialight.com/news/details/gsdunn\\_case\\_study](http://www.dialight.com/news/details/gsdunn_case_study)  
Rockline Industries - [www.dialight.com/news/details/rockline\\_case\\_study](http://www.dialight.com/news/details/rockline_case_study)  
MedSafe - [www.dialight.com/news/details/medsafe\\_case\\_study](http://www.dialight.com/news/details/medsafe_case_study)  
Kuehne + Nagel - [www.dialight.com/news/details/kuehne\\_nagel\\_case\\_study](http://www.dialight.com/news/details/kuehne_nagel_case_study)

### Dialight also offers their products for Hazardous Locations

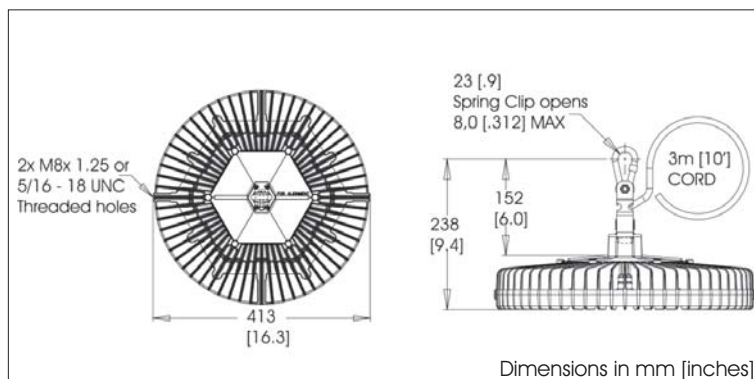


Complete your own Return on Investment calculation at: [www.dialight.com/tcoCalculator/Vigilant\\_HighBay](http://www.dialight.com/tcoCalculator/Vigilant_HighBay)



## Vigilant® H2 Series LED High Bay - CE

140 lm/W



### Certifications & Ratings

- CE
  - EN 55015:2013
  - EN 61547:2009
  - EN 60598:2008
- IEC60068 salt spray testing- severity 1
- IK05 to EN50102
- IP 66 to EN60529

### Features & Benefits

- 10 year full performance warranty
- 140 lm/W Typical
- L70 rated for > 100,000 hours
- Significantly reduced glare
- Instant on/off
- Maintenance free
- Mercury free
- No UV or IR
- Resistant to shock and vibration

### Application

At 140 lumens per Watt, Dialight's new ultra-efficient industrial LED High Bay revolutionises the world of LED lighting and leads the LED luminaire market with the highest level of efficacy. With a market-leading 10 year full performance warranty, the new Vigilant® High Bay utilises cutting-edge optical and electrical design to provide for significantly reduced glare and superior light distribution.

In its compact and lightweight structure, Dialight's new 140 lumen per Watt LED High Bay is designed to meet the most demanding specifications and is perfect for any industrial application where improved light levels are needed at minimum energy consumption for more than a decade.

### Mechanical Information

Fixture weight:	8.16kg (18 lbs)
Shipping weight:	10.8kg (24 lbs)
Mounting:	Hook (supplied) or Swivel bracket (supplied separately)
Cabling:	3m (10') PVC Power Cord

### Electrical Specifications

Operating Voltage:	110 – 277V AC:	25,250lm models
Total system power consumption:	See Table	
Operating Temp:	-40°C to +65°C (-40°F to +149°F)	
Harmonics:	IEC 61000-3-2	
Transient protection:	Protection devices capable of handling up to 6kV. Tested for 6kV/2 ohm combination wave, as per IEEE C62.41, line-line and line-ground	
Power Factor:	> 0.9	
THD:	<20%	

### Construction:

Housing:	Copper free aluminium
Finish:	Polyester powder coated gray RAL 7040
Lens:	Tempered glass

### Photometric Information

CRI:	75
CCT:	5000K (cool white)

\*80 CRI option available, please consult factory

All values typical unless otherwise stated  
Lumen values are typical (tolerance +/- 10%)

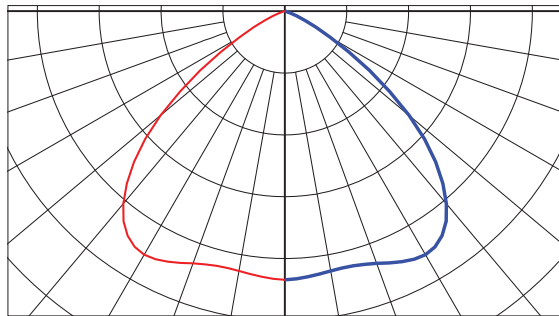
# Vigilant® H2 Series LED High Bay - CE

## Ordering Information

Part Number	Initial Fixture Lumens	Wattage	Lumens Per Watt	CCT	Ingress Protection	Voltage	Lens	Optical Pattern
								Circular
Standard Models								
H2EGMC4NN-HNG	25,250	180	140	5000 (Cool White)	IP66	110 - 277V AC	Tempered Glass	•
Variable Dimming Models								
H2EGMC4ND-HNG	25,250	180	140	5000 (Cool White)	IP66	110 - 277V AC	Tempered Glass	•

## Optical Pattern

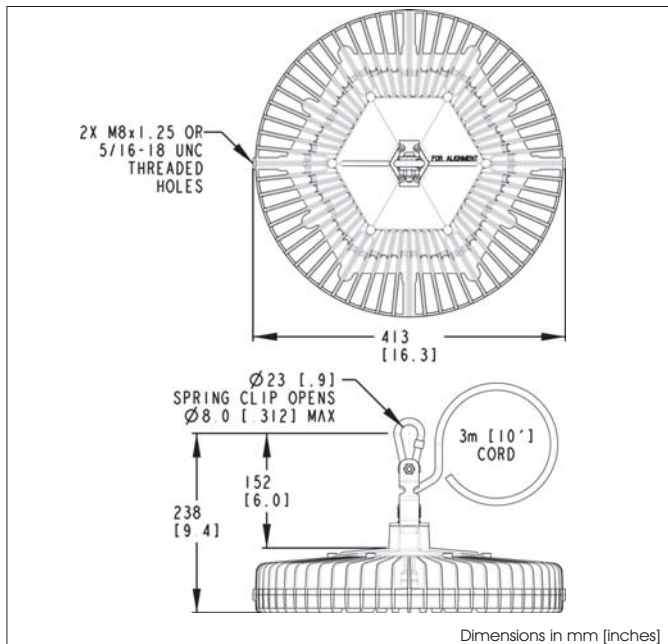
Circular pattern





# Vigilant® H2 Series LED High Bay - CE

Variable Dimming: 0-10V DC



Mechanical, Electrical and Photometric information is the same on page 3 except where detail is provided

**Variable Dimming Cable:** Dimming connection is via 2 conductors included in the standard, factory installed, 5-core cable

**Variable Dimming Control:** 0-10 V DC

**Typical Dimming Range:** 10V DC = 100% light output  
0V DC = 30% light output

## Features & Benefits

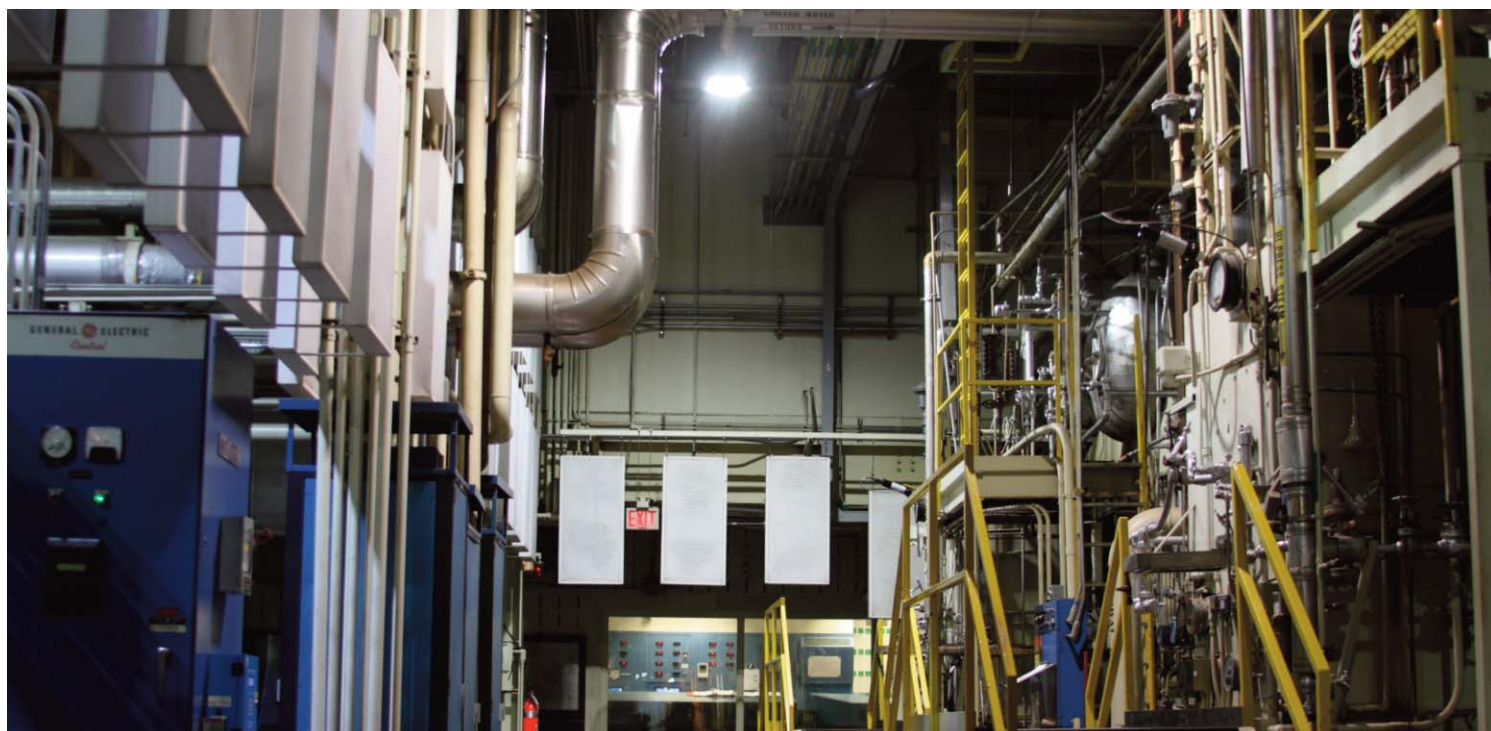
- 3 meter, 5 core PVC cable pre-installed
- Multiple High Bays can be connected to the same dimmer



# Vigilant® H2 Series LED High Bay - CE

## Options and Accessories

	Part Number	Description	Kit Includes
	HBXW3	Swivel Bracket (Aluminium)	Swivel Bracket Bracket to Fixture Hardware
	HBXGS-10	Glare Shield - sets of 10 Grey (RAL7001) powder coated spun aluminium (Interior use only, for use with flat lens options)	Aluminium shield and securing hardware
	HBXSBDK	Sand blast kit (dome lens)	Bracket and dome lens
	HBXSBDL	Sacrificial dome Lens	Replacement dome lens
	HBXSBK	Sand blast kit (flat lens)	Bracket and flat lens
	HBXSBL	Sacrificial flat Lens	Replacement flat lens

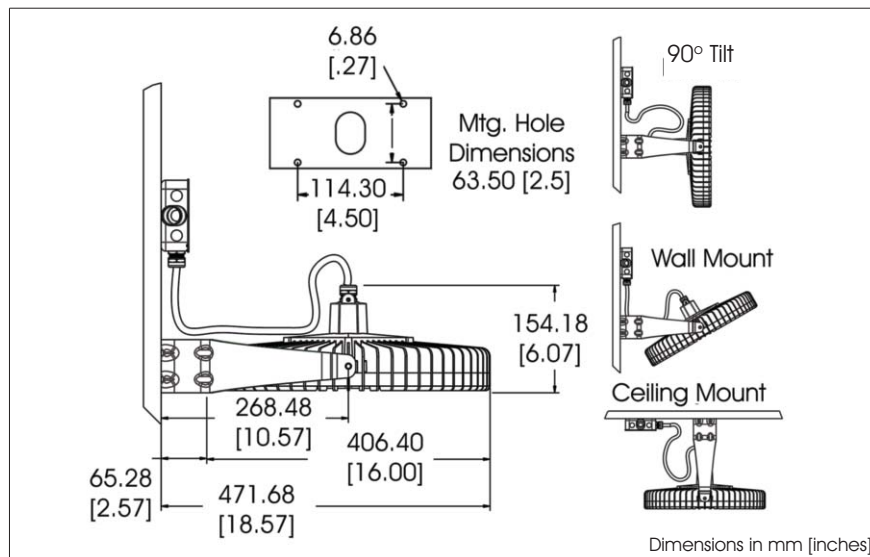




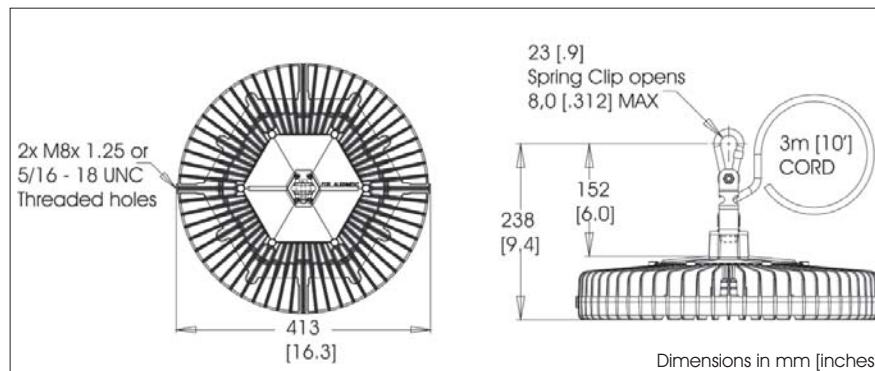
# Vigilant® H2 Series LED High Bay - CE

## Options and Accessories

### HBXW3 - Swivel Bracket and Cable Gland



### Standard Hook dimensions



Dialight reserves the right to make changes at any time in order to supply the best product possible. The most current version of this document will always be available at: [www.dialight.com/Assets/Brochures\\_And\\_Catalogs/Illumination/MDEXVHBH2EUX001.pdf](http://www.dialight.com/Assets/Brochures_And_Catalogs/Illumination/MDEXVHBH2EUX001.pdf)

Warranty Statement: EXCEPT FOR THE WARRANTY EXPRESSLY PROVIDED FOR [HEREIN/ABOVE/BELOW], DIALIGHT DISCLAIMS ANY AND ALL OTHER WARRANTIES, EXPRESS OR IMPLIED, INCLUDING, WITHOUT LIMITATION, ANY WARRANTIES OF MERCHANTABILITY, FITNESS FOR A PARTICULAR PURPOSE, TITLE, AND NONINFRINGEMENT.

**Vigilant® H2 Series LED High Bay - CE**  
for Indoor and Outdoor Industrial Applications

